

# GANDHAMARDAN'S GREEN-ION

ODISHA'S FIRST EXCLUSIVE SUSTAINABLE STAY



PENCIL FOR CHANGE

[www.pencilforchange.com](http://www.pencilforchange.com)



2024

Experience the perfect blend of accessibility and tranquility in this beautiful location!



#### Nestled in Nature's Embrace

- Nearby Attractions:
- 40 Minutes to Dumkanusa Waterfall.
- 30 Minutes to Ashok Vatika Park.
- Proximity to Nature:
- Just across from Sanaghagara & Badaghagara Waterfall, offering a serene escape.

Experience a harmonious blend of comfort and nature with these exceptional features!

## Features

- Spacious Cottages
- Ample space and privacy.
- Charming Accommodation:
- Aesthetically designed farm cottages for a cozy retreat.
- Utilities:
- Solar power backup for each cottage ensures sustainable energy.
- Eco-Friendly Facilities:
- Biodigester toilets for environmentally conscious waste management.
- Infrastructure:
- Paved roads for easy accessibility.
- Solar street lights enhancing safety and sustainability.
- Sustainable Cafe & shopping outlets
- Green Surroundings:
- Lush green plantations promoting biodiversity.
- Bio Pool
- Sustainable farming





Option 1: This environment friendly cottages, gallery & cafe layout provides an eco-friendly and self-sustaining environment with a focus on natural beauty, community living, and educational opportunities about sustainability.

SUSTAINABLE DEVELOPMENT



Geothermal



Forest

Option 2: "This environmentally friendly cafe, mining gallery, and cottages offer educational opportunities focused on sustainability while serving delicious local cuisine. By engaging with the community, the space fosters learning and dialogue around sustainable practices, all while supporting local food producers and artisans."



Water Goals



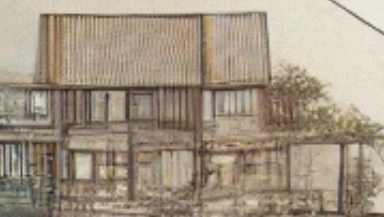
Responsible Forestry



Water Quality



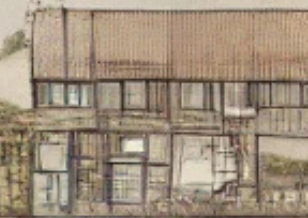
Navigation



Architectural drawing label



8-57 NE



Kottsein Garden

Option 3: "This eco-friendly cafe and museum offers educational opportunities focused on sustainability and mining, while celebrating local cuisine and culture. By engaging the community, it provides a space for learning, reflection, and meaningful conversations about sustainability, all while supporting local producers and artisans."



22 Sustainable Pools

Kerbal Pools

Bio Pools  
Herbal Gardens

Sustainable

Popeped

Bio Pools

Building Road

KITCHEN GARDENS SARCOPH

BIBO Gardens

Bio Pools

Kerbal Garden

Kitchen Gardens

Gardens

Option 4: "This sustainable cafe, mining museum, gallery, and shopping space, along with cozy cottages, offer a comfortable stay while providing educational opportunities on environmental and social responsibility. By serving local cuisine and engaging with the community, it fosters a deeper connection to sustainability and the region's cultural heritage."



POOL

SUSTAINABLE FARMHOUSE



POOL



BUNNIA GARDEN



BIRDEI GARDEN



BIO POOL



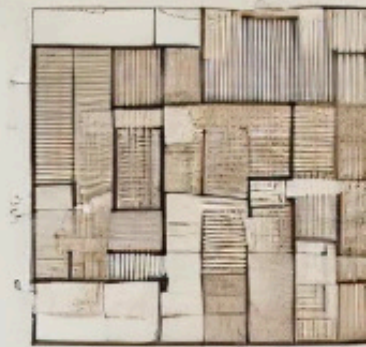
HERBAL GARDEN



KITCHEN GARDEN



KITCHEN GARDEN



KITCHEN GA



Option 5: "These eco-friendly cottages, equipped with solar panels, alongside a cafe, museum, gallery, and open-air theater, offer a unique space for learning about sustainability and mining. With organic farming, kitchen gardens, and a bio pool on-site, visitors can explore sustainable practices firsthand. The cafe serves local cuisine, fostering community engagement and supporting local people and producers."





Option 6: "These eco-friendly cottages, cafe, and museum offer educational opportunities focused on sustainability and mining, while serving local cuisine and engaging with the community. The surrounding area is developed using sustainable building materials, complemented by beautiful gardens and a bio pool, creating a harmonious environment that reflects eco-conscious living."



Option 7: "This sustainable cafe, mining gallery, shopping complex, and eco-friendly cottages, featuring bio pools, planned gardens, and farming, offer educational opportunities focused on environmental and social responsibility. By serving local cuisine and engaging with the community, the space promotes sustainability while supporting local culture and producers."

# 2D Sustainable Development Plan

- 8.87-acred 50 build-up area
- Serboto tile bulced-up
- Kitchen garden



Option 8: "This environmentally friendly cafe, mining gallery, and cottages offer educational opportunities focused on sustainability while serving delicious local cuisine. By engaging with the community, the space fosters learning and dialogue around sustainable practices, all while supporting local food producers and artisans."



Option 9: This environment friendly cottages, gallery & cafe layout provides an eco-friendly and self-sustaining environment with a focus on natural beauty, community living, and educational opportunities about sustainability.

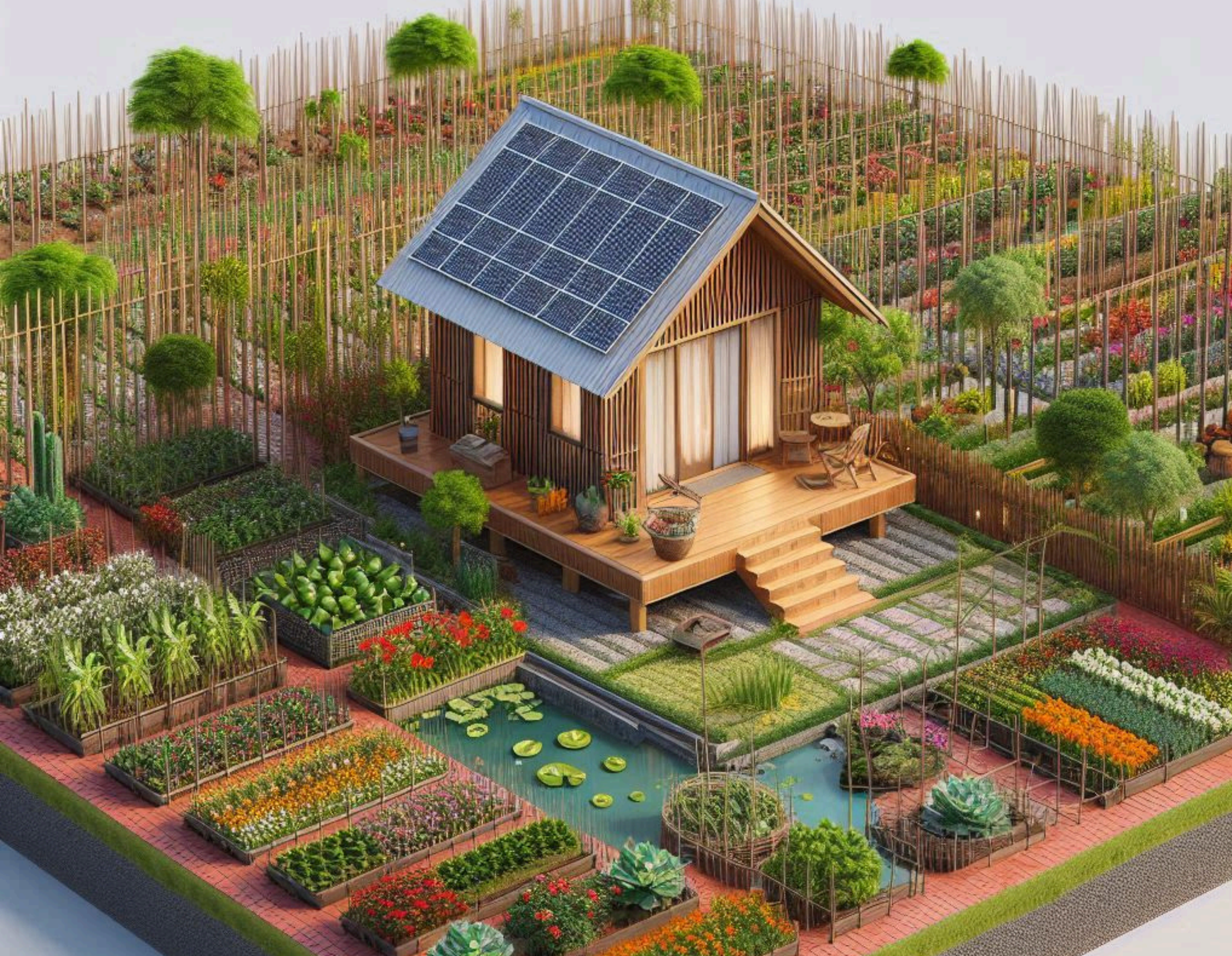
## 2 STE PLAN

- 27 270 sq ft farmhouse
- 20 200 sq ft farmhouse
- Herbal gardens

- 27 stored for 500 sq ft
- Herbal gardens near the ground



Option 10: "This eco-friendly cafe and museum offers educational opportunities focused on sustainability and mining, while celebrating local cuisine and culture. By engaging the community, it provides a space for learning, reflection, and meaningful conversations about sustainability, all while supporting local producers and artisans."



Option 11: This layout provides a sustainable self-sustaining environment with a focus on natural beauty and educational opportunities about sustainability, organised farming, gardening, local food, art & craft, bio pool.



Option 12: "This eco-friendly cafe and museum offers educational opportunities focused on sustainability and mining, while celebrating local cuisine and culture. By engaging the community, it provides a space for learning, reflection, and meaningful conversations about sustainability, all while supporting local producers and artisans."



Option 13: "This sustainable cafe and gallery offers a vibrant platform for educating the community about sustainability and the importance of mining, while showcasing local art and culture. By serving locally sourced cuisine, the space fosters engagement with local people and promotes a deeper understanding of sustainable practices and their connection to the community and environment."





Art & Architecture will set us free! Free yourself to imagine the unimaginable.  
Art of consciousness, Art of Science & Art of Technology.

Pencil for Change, a NGO : N- Nothing, G-Gets, O-Overlooked. At Pencil For Change, we strives to make this world a better place for all to coexist in harmony by taking multiple initiatives in every aspect varying from Poverty to Climate Change. All this summarizes into a single cause - "TO BRING CHANGE" , Challenging the Stereotype of masculinity by sustainable luxury & integrating cultural heritage!



**CREATIVE DIRECTOR**

Mr. Pattnaik Ompriya Mohanty  
Entrepreneur, Environmentalist, Artist, Architect &  
Social Activist

Arch Mohanty, who was brought up in rural tribal town called Muniguda, Koraput, Odisha, a serial entrepreneur, a sustainable architecture specialist, 2 times TEDX Speaker in prestigious government medical college. since 2008 he has been driving multiple social enterprise initiatives to empower the youngsters especially orphans, underprivileged children through his social enterprise “Chrysalis Foundation for self expression” , women & men, LGBTQ and marginalised communities in the bottom of the pyramid (societal hierarchy) through his sustainable architecture, interior design, fashion, lifestyle, shoes, biodegradable toys and home decor brand called Vari in London. After his sustainability study in The United Kingdom, he has published few research papers on draught cooling, natural ventilation, parametric design in Belgium, Peru, Germany and India. He is currently engaged in Pencil For Change, social and environmental conscious AI platform that helps people manage their health and wealth by cutting medicine, food & other waste. at-

[www.pencilforchange.net](http://www.pencilforchange.net), [www.pencilforchange.com](http://www.pencilforchange.com) ,  
[www.pencilforchange.in](http://www.pencilforchange.in), [www.bidding.pencilforchange.in](http://www.bidding.pencilforchange.in) ,  
[www.wastez.pencilforchange.in](http://www.wastez.pencilforchange.in) , [www.purikhaja.com](http://www.purikhaja.com) ,  
[www.declutter.pencilforchange.com](http://www.declutter.pencilforchange.com) . Presently he is having a sustainability influencer account as @omreu in , search him in “ <https://www.google.com/search?q=pattnaik+ompriya+mohanty> “



**SOCIAL MEDIA & WEBSITES**

**14.1K**

**INSTAGRAM @OMREU**

**@PENCILFORCHANGE**

**@PURI\_KHAJA**

**@INVOGUEVARILONDON**

[HTTPS://PENCILFORCHANGE.COM/](https://pencilforchange.com/)  
[HTTPS://PENCILFORCHANGE.NET/](https://pencilforchange.net/)  
[HTTPS://PENCILFORCHANGE.IN/](https://pencilforchange.in/)  
[HTTPS://BIDDING.PENCILFORCHANGE.IN/](https://bidding.pencilforchange.in/)  
[HTTPS://WASTEZ.PENCILFORCHANGE.IN/](https://wastez.pencilforchange.in/)  
[HTTPS://PURIKHAJA.COM](https://purikhaja.com)  
[HTTPS://DECLUTTER.PENCILFORCHANGE.COM/](https://declutter.pencilforchange.com/)

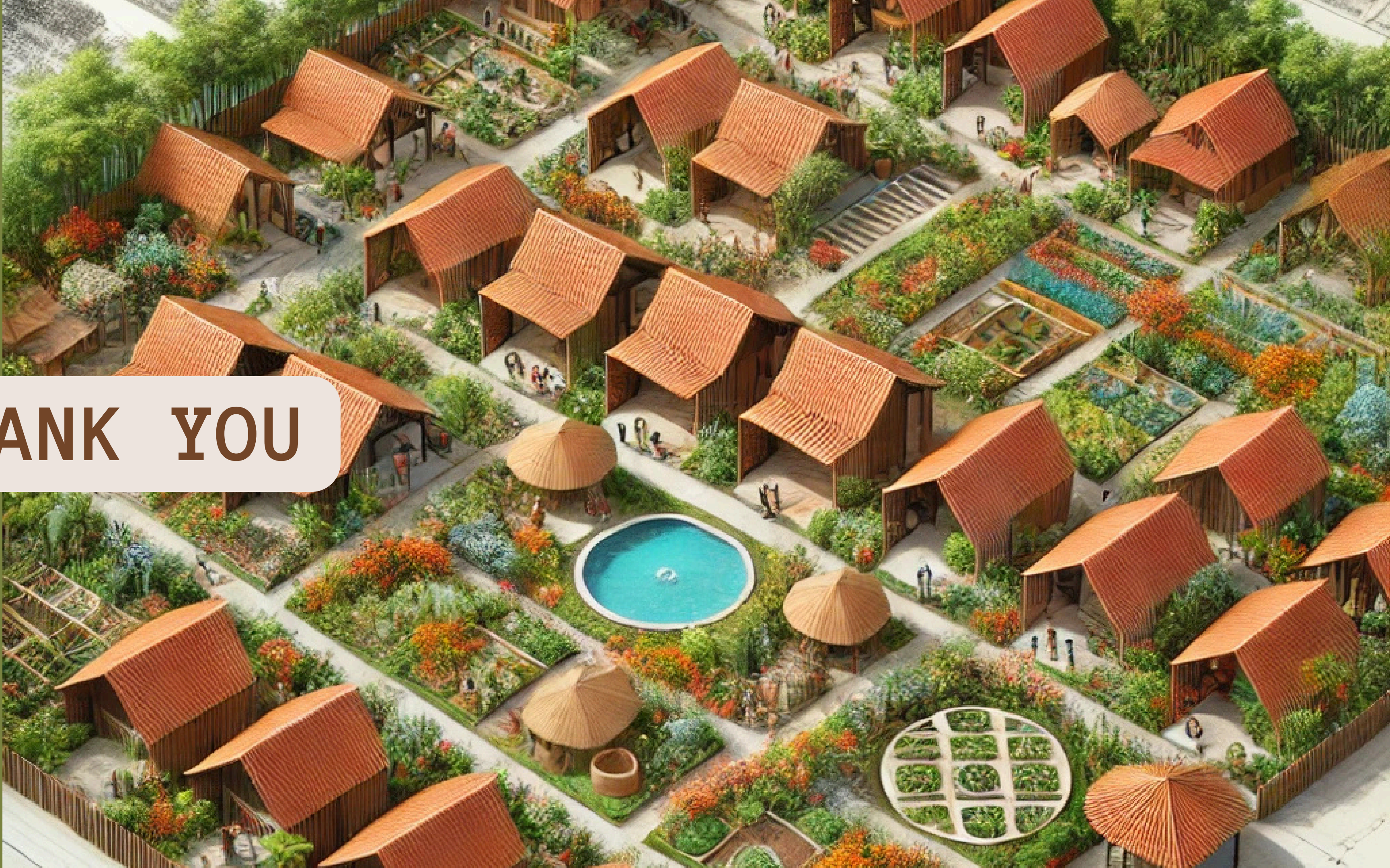


## CONTACT US

PHONE: +91 9711320305, +44 7788209665

WEBSITE: [WWW.PENCILFORCHANGE.COM](http://WWW.PENCILFORCHANGE.COM)

EMAIL: [INFO@PENCILFORCHANGE.COM](mailto:INFO@PENCILFORCHANGE.COM)



**THANK YOU**